

Assignment for “The History of England”

Addendum: If you are feeling up to it, try to complete this exercise in full as I’m asking for it. If not (especially as I’m getting this to you so late), then follow through the “Steps for the assignment” section below, which I’ve modified. If you want to complete the entire exercise, then the shortened Steps below will start you on your way. If you feel like you can’t do the whole thing, then try to create the list in the navigation cell (explained below). We are going to go through this exercise in class together on 10/3, so it’s helpful if you have some piece of this done by then.

In this assignment, I would like you to create a small web site about the history of England (with content that I’ve borrowed freely from wikipedia). The site should contain three html pages, each of which should be styled with one external style sheet. In other words, by the end of this assignment, you will have four documents to add to your NYUHome site: three html pages and one .css document (this is the external style sheet).

The three pages are as follows:

1. History
2. Politics
3. Geography

Guidelines for content and style:

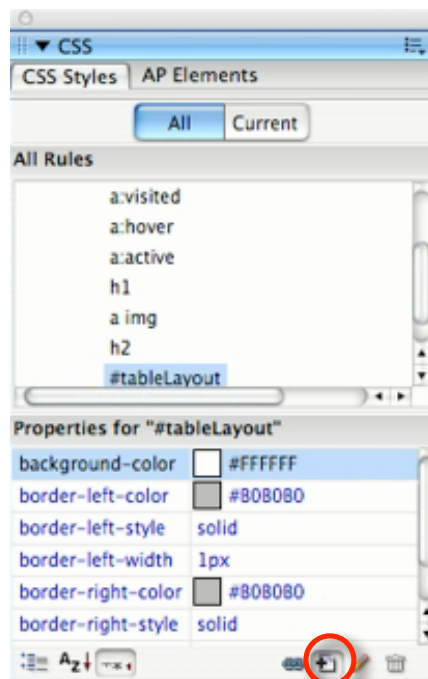
1. Each page should have 4 sections: *title*, *body*, *navigation*, and *keywords*. I’d like you to create these sections by creating a table, as we did in class, and then assign an ID to each section of the table using the four labels. So, the table would look like this:

title		
navigation	body	keywords

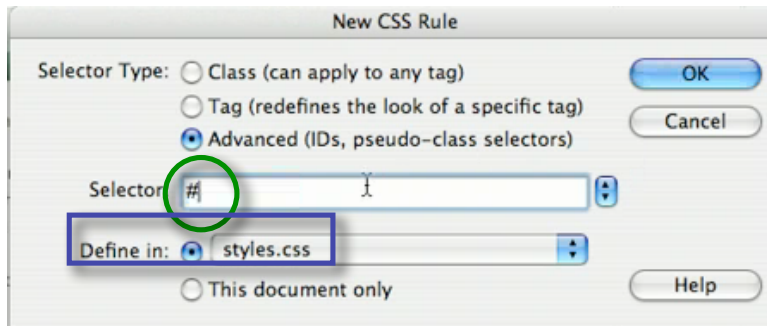
2. Each page should have at least three images relevant to the content
3. Each page should have at least three key words defined in the *keywords* section
4. Be consistent with background coloring for each section of the page
5. Each page should be linked to every other page with all of the pages represented and linked in the navigation area
6. Use CSS pseudo-selectors for your navigation (these are the following tags: a:link, a:visited, a:hover, a:active)
7. For text, each section of a page should be defined with a header of some kind, as should each subsection, just as it is on this page.
8. All tags should be defined using CSS on an external sheet. That means that each of the three html pages will be linked to the style sheet and that there will be no internal styling

Steps for the assignment:

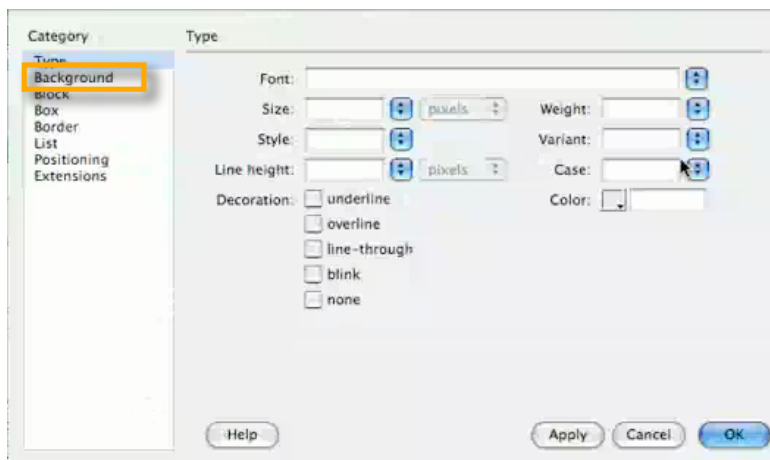
1. Remember: the first thing to do always is to create a “New site” in Dreamweaver. At this point, you probably have one folder (which already contains the work that you’ve done already) that you’ve been using. So, make sure that you have that folder on the desktop of whatever computer you’re working on.
2. Right off the bat: create one blank html page and save it. Make sure that you give it a title using the Title bar in Dreamweaver.
3. Go ahead and create a table like we did in class (use the Insert menu or the Insert Table icon from the Insert bar) so that it resembles the table above. For now, set it’s width to 700 pixels.
4. In class, we created an “ID,” remember? The beauty of an ID is that we can take any html element (for now, think of an element as a tag: <a>, <td>, and <table> are all elements) and give it it’s own unique ID so that we can style it any way that we want. In this exercise, we will have 4 table cells (which are <td> tags, or “table data”). If we were to change the <td> tag using style sheets, then every single instance of the <td> tag (in our case, all 4 cells) would be modified that way. But we want to be able to style our cells independently of one another, hence the ID tags.
5. Remember that we use the “#” sign to identify an ID. So, if I were to create a new ID called navigation, it would look like “#navigation” in the style sheet.
6. Also remember that we only want to use the ID once per page. You might create 25 ID’s for one page, but the specific ID “#navigation” should show up only once on that page.
7. To create a new ID, use the CSS panel (if you don’t see it, go to the Windows menu). It looks like this the screen shot below. You want the “Add style” button, which is circled in red below:




8. The **New CSS Rule** menu, pictured below, will come up. With the “Advanced” radio button checked, create a new ID (making sure that it begins with the #sign, like the green circle below) called “#navigation”—this is going to be the ID for the left cell in the table which will become our navigation area. I want you to define it (using the “Define in:” option, in the blue box below in an external style sheet called “styles.css”. As you have not yet created this style sheet, it will be a good opportunity for you to create it now. Make sure that it’s saved in your site folder!




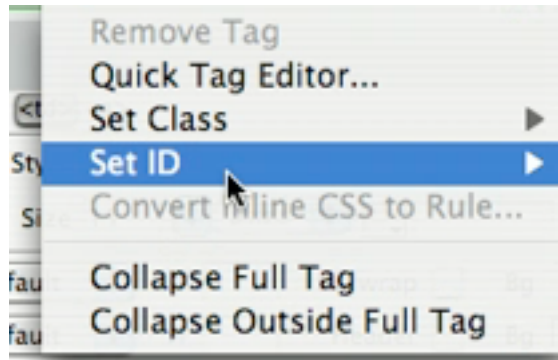
9. Now the **CSS Rule Definition** box will come up. This is where you actually define what the ID will look like—you can change the text appearance, background color, margin, padding, anything. I’m not so concerned about what this looks like right now, so go ahead and play around. It’ll be useful for you to change the background color (in the Background menu, in the orange box below) so that you get some immediate feedback once you actually create the ID. Once you’re done with everything, click on OK.



10. For the moment, we still haven’t actually got an ID called navigation. What we’ve done so far is to create an external style sheet and then on that sheet we’ve said (in our conversation with the browser...), “when you see an object on the page called “Navigation,” make it look like this...” In class, we were hand coding the ID’s. So, if you were to look up at the code (***)it’s very helpful for you to design using the “Split” mode—remember, you can access that mode by clicking on the Split button ( Split) in the top left hand corner of the document window. This way, you can see the code as you are designing.

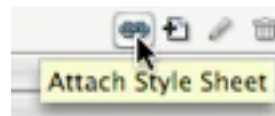
- a. The code will look something like this: `<td id = “navigation”></td>`

- b. But now let's use the shortcut. Once you're done creating the CSS rule, click the cell in the table that you created that is going to be the "navigation" cell.
- c. Now, in the lower right corner of the document window, you'll see all of the tags that are used for that table (like this: ). Right-click (or Control-click) on the <td> tag and the following menu will come up:

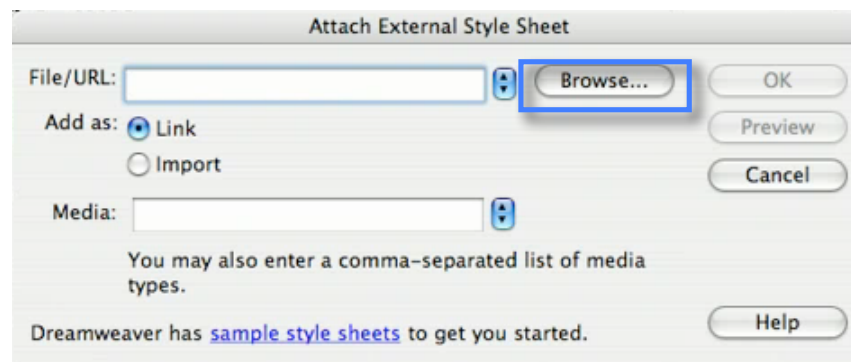


Any of the IDs that you have created will appear. Just click on the ID name and the cell will be styled according to the rule that you set.

- d. If for whatever reason you are not seeing the ID that you created, then make sure that the HTML page is linked to the external style sheet. Remember, we wanted to make sure that all of our styles are defined on an external style sheet (rather than internally for just this page) so that we can link other pages to it in order to modify them using just one style sheet. To link the HTML page to an external style sheet, click on the Attach Style Sheet button in the CSS panel, pictured below:



The following menu will appear. Make sure that the Link radio button is checked and use the Browse button (in the blue box below) to find the style sheet—it should be in your site folder! Once it's linked, the table cell should reflect the changes.



- 11. The last thing that I would like you to do is to create an unordered, or bulleted, list (the tag is , which lets the browser know that anything between and is part of an unordered list; if we wanted a numbered list, the tag would be for "ordered list")

inside of the navigation area. You're going to use this for your navigation. Make sure that your cursor is in the "navigation" cell and click on the unordered list icon (circled in red below) in the Properties bar. It looks just like the bulleted list icon that you would see in Microsoft Word:



12. Go ahead and type the names of the pages that this site will contain (each one will be on its own line), like so:
 - History
 - Politics
 - Geography
13. Now turn all of those into links by using the Properties bar (remember that if the pages don't actually exist yet, you can type "#" in the Link bar, which is basically just a placeholder).
14. Modify the `` (this is the "list item" tag—when you have a list tag, the `` tags inside of it create new list items, each appearing on its own line with a bullet) and `<a>` (this is the "anchor" tag, which is what makes hyperlinks) tag by creating a new CSS rule—click on the plus sign (see #7 above if you forget what this looks like) in the CSS panel. This time, make sure that the "Tag" radio button is selected. A list of all of the html tags that you can modify will appear.
 - a. You'll need to modify each tag one at a time. Here's what I'd like:
 - i. Make sure that the `` tag has no decoration. Do this by selecting the List menu once you've selected `` in the New CSS Rule box. In there, make sure that style is set to None—this will get rid of the bullets for list items
 - ii. For the `<a>` tag, make sure that the Text decoration is set to None—this will ensure that there is no underlining for the hyperlinks. You'll find this option in the Text menu in the CSS Rule Definition box
 - iii. If you want, play around with the `<a>` tag: give it a border, some padding, a margin, and a background color. This will make it look like a button.
15. That's it for now. If you're going to continue with the rest of this assignment, then copy and paste the text below for your content. We'll look at it all together on Wednesday.

Page Content (cut and paste it in!!)

1. History

Prehistoric England

Bones and flint tools found in Norfolk and Suffolk show that *Homo erectus* lived in what is now England around 700,000 years ago. At this time, England was linked to mainland Europe by a large land bridge. The current position of the English Channel was a large river

flowing westwards and fed by tributaries that would later become the Thames and the Seine. This area was greatly depopulated during the period of the last major ice age, as were other regions of the British Isles. In the subsequent recolonisation, after the thawing of the ice, genetic research shows that present-day England was the last area of the British Isles to be repopulated^[14], circa 13,000 years ago. The migrants arriving during this period contrast with the other of the inhabitants of the British Isles, coming across land from the south east of Europe, whereas earlier arriving inhabitants came north along a coastal route from Iberia. These migrants would later adopt the Celtic culture that came to dominate much of western Europe.

Roman conquest of Britain

By AD 43, the time of the main Roman invasion of Britain, Britain had already frequently been the target of invasions, planned and actual, by forces of the Roman Republic and Roman Empire. Like other regions on the edge of the empire, Britain had long enjoyed trading links with the Romans, and their economic and cultural influence was a significant part of the British late pre-Roman Iron Age, especially in the south. With the fall of the Roman empire 400 years later, the Romans left England.

Anglo-Saxon England

The History of Anglo-Saxon England covers the history of early mediaeval England from the end of Roman Britain and the establishment of Anglo-Saxon kingdoms in the fifth century until the Conquest by the Normans in 1066.

Fragmentary knowledge of Anglo-Saxon England in the 5th and 6th centuries comes from the British writer Gildas (6th century) the Anglo-Saxon Chronicle (a history of the English people begun in the 9th century), saints' lives, poetry, archaeological findings, and place-name studies.

The dominant themes of the seventh to tenth centuries were the spread of Christianity and the political unification of England. Christianity is thought to have come from three directions — from Rome to the south, and Scotland and Ireland to the north and west. Heptarchy is a term used to refer to the existence (as believed) of the seven petty kingdoms which eventually merged to become the Kingdom of England during the early 10th century: Northumbria, Mercia, East Anglia, Essex, Kent, Sussex, and Wessex.

The Anglo-Saxon kingdoms tended to coalesce by means of warfare. As early as the time of Ethelbert of Kent, one king could be recognised as Bretwalda ("Lord of Britain"). Generally speaking, the title fell in the 7th century to the kings of Northumbria, in the eighth to those of Mercia, and finally, in the ninth, to Egbert of Wessex, who in 825 defeated the Mercians at the Battle of Ellendun. In the next century his family came to rule all England.

Kingdom of England

Originally, England (or Engaland) was a geographical term to describe the territory of Britain which was occupied by the Anglo-Saxons, rather than a name of an individual nation-state. It became politically united through the expansion of the kingdom of Wessex, whose king Athelstan brought the whole of England under one ruler for the first time in 927, although unification did not become permanent until 954. In 1016 England was conquered by the Danish king Canute the Great, and became the centre of government for his short-lived empire which also included Denmark and Norway. In 1042 England became a separate kingdom again with the accession of Edward the Confessor, heir of the native English dynasty.

The Kingdom of England (including Wales) continued to exist as an independent nation-state right through to the Acts of Union and the Union of Crowns. However the political ties and direction of England were changed forever by the Norman Conquest in 1066.

Norman Conquest

Kingdom of England by William the Conqueror (Duke of Normandy), in 1066 at the Battle of Hastings and the subsequent Norman control of England. It is an important watershed in English history for a number of reasons. The conquest linked England more closely with Continental Europe, and lessened Scandinavian influence. The success of the conquest established one of the most powerful monarchies in Europe, created the most sophisticated governmental system in Europe, changed the English language and culture, and set the stage for English-French conflict that would last into the nineteenth century.

The events of the conquest also paved the way for a pivotal historical document to be produced - the Domesday Book. The Domesday Book was the record of the great survey of England completed in 1086, executed for William the Conqueror. The survey was similar to a census by a government of today and is England's earliest surviving public records document.

Mediæval England

The next few hundred years saw England as an important part of expanding and dwindling empires based in France, with the "Kings of England" using England as a source of troops to enlarge their personal holdings in France for many years (Hundred Years' War); in fact the English crown did not relinquish its last foothold on mainland France until Calais was lost during the reign of Mary Tudor (the Channel Islands are still crown dependencies, though not part of the UK).

The Principality of Wales, under the control of English monarchs from the Statute of Rhuddlan in 1284, became part of the Kingdom of England by the Laws in Wales Acts 1535–1542. Wales shared a legal identity with England as the joint entity originally called *England* and later *England and Wales*.

An epidemic of catastrophic proportions, the Black Death first reached England in the summer of 1348. The Black Death is estimated to have killed between a third and two-thirds of Europe's population. England alone lost as many as 70% of its population, which passed from 7 million to 2 million in 1400. The plague repeatedly returned to haunt England throughout the fourteenth to seventeenth centuries. The Great Plague of London in 1665–1666 was the last plague outbreak.

Reformation

During the English Reformation, the external authority of the Roman Catholic Church in England was abolished and replaced with Royal Supremacy and ultimately describes the establishment of a Church of England, outside the Roman Catholic Church, under the Supreme Governance of the English monarch. The English Reformation differed from its European counterparts in that it was a political, rather than purely theological, dispute at root.^[16] The break with Rome started in the reign of Henry VIII.

The English Reformation paved the way for the spread of Anglicanism in the church and other institutions.

English Civil War

Cromwell at Dunbar. Oliver Cromwell united the whole of the British Isles by force and created the Commonwealth of England.

The English Civil War was a series of armed conflicts and political machinations which took place between Parliamentarians and Royalists from 1642 until 1651. The first (1642–1645) and second (1648–1649) civil wars pitted the supporters of King Charles I against the supporters of the Long Parliament, while the third war of (1649–1651) saw fighting between supporters of King Charles II and supporters of the Rump Parliament. The Civil War ended with the Parliamentary victory at the Battle of Worcester on 3 September 1651.

The Civil War led to the trial and execution of Charles I, the exile of his son Charles II and the replacement of the English monarchy with the Commonwealth of England (1649–1653) and then with a Protectorate (1653–1659): the personal rule of Oliver Cromwell. After a brief return to Commonwealth rule, in 1660 The Crown was restored and Charles II accepted Convention Parliament's invitation to return to England. During the interregnum the monopoly of the Church of England on Christian worship in England came to an end, and the victors consolidated the already-established Protestant Ascendancy in Ireland. Constitutionally, the wars established a precedent that British monarchs could not govern without the consent of Parliament although this would not be cemented until the Glorious Revolution later in the century.

Great Britain and the United Kingdom

The Kingdom of England and the Kingdom of Scotland remained separate, until 1707, when under the Acts of Union, both England and Scotland lost their individual political (though not legal) identities. This union has subsequently changed its name twice; firstly on the merger with the Kingdom of Ireland following the Act of Union in 1800 creating the United Kingdom of Great Britain and Ireland in 1801. Then following the secession from the union of the Irish Free State under the terms of the Government of Ireland Act 1920, it became the United Kingdom of Great Britain and Northern Ireland. Throughout these changes, England (including Wales) retained a separate legal identity from its partners, with a separate legal system (English law) from those in Northern Ireland (Northern Ireland law) and Scotland (Scots law), and eventually the strong feelings of the Welsh were acknowledged when it was decided that the name would henceforth be

2. Politics

There has not been a Government of England since 1707, when the Kingdom of England merged with the Kingdom of Scotland to form the Kingdom of Great Britain, although both kingdoms have been ruled by a single monarch since 1603. Prior to the Acts of Union of 1707, England was ruled by a monarch and the Parliament of England.

The Scottish and Welsh governing institutions were created by the UK parliament with support from the majority of people of Scotland and Wales in referenda in 1997 and are not independent of the rest of Britain. However, this gave each country a separate political entity which left England as the only part of Britain directly ruled in nearly all matters by the British government in London. In Cornwall, a region of England claiming a distinct national identity, there has been a campaign for a Cornish assembly along Welsh lines by nationalist parties such as Mebyon Kernow.

Because Westminster is the UK parliament but also votes on local English matters devolution of national matters to parliament/assemblies in Scotland, Wales and Northern Ireland has refocused attention on a long-standing anomaly called the West Lothian

question. The “Question” is that there is no convention or rule whereby Scottish MPs are barred from voting on issues relating only to England and Wales in the post devolution era. Welsh devolution has removed the anomaly for Wales, but highlighted the anomaly for England: Scottish and Welsh MPs can vote on English issues, but purely Scottish and Welsh issues are debated in Scotland and Wales, not at Westminster; in fact Scottish MPs are even unable to vote on such issues affecting their *own* constituencies. This problem is exacerbated by an over-representation of Scottish MPs in the government, sometimes referred to as the Scottish mafia; as of September 2006, seven of the twenty-three Cabinet members are Scottish, including the Chancellor of the Exchequer, Home Secretary and Defence Secretary.

In addition, Scotland traditionally benefited from moderate malapportionment in its favour, increasing its representation to a degree disproportionate to its population. In 2004 the Scottish Parliament (Constituencies) Act 2004 was passed which rectified this to a degree, reducing the number of MPs representing Scottish constituencies from 73 to 59 and brought the number of voters per constituency closer to that in England. This change was implemented in the 2005 General Election.

In terms of national administration, England’s affairs are managed by a combination of the UK government, the UK parliament, a number of England-specific quangos, such as English Heritage, and the mostly unelected Regional Assemblies (a kind of nascent executive for each English Region).

There are calls for a devolved English Parliament, and certain English parties go further by calling for the dissolution of the Union entirely. However, the approach favoured by the current Labour government was (on the basis that England is too large to be governed as a single sub-state entity) to propose the devolution of power to the Regions of England. Lord Falconer claimed a devolved English parliament would dwarf the rest of the United Kingdom.¹ Referendums would decide whether people wanted to vote for directly-elected regional assemblies to watch over the work of the non-elected Regional Development Agencies.

During the campaign, a common criticism of the proposals was that England did not need “another tier of bureaucracy.” On the other hand, many said that they were not decentralising enough, and amounted not to devolution, but to little more than local government reorganisation, with no real power being removed from central government, and no real power given to the regions, which would not even gain the limited powers of the Welsh Assembly, much less the tax-varying and legislative powers of the Scottish Parliament (but Welsh powers are now being expanded). They said that power was simply re-allocated within the region, with little new resource allocation and no real prospects of Assemblies being able to change the pattern of regional aid. Late in the process, responsibility for regional transport was added to the proposals. This was perhaps crucial in the North East, where resentment at the Barnett Formula, which delivers greater regional aid to adjacent Scotland, was a significant impetus for the North East devolution campaign. However, a referendum on this issue in North East England on 4 November 2004 rejected this proposal, and plans for referendums in other Regions (such as Yorkshire) were shelved.

3. Geography

This section should contain at least 4 historical maps of England and the UK.